

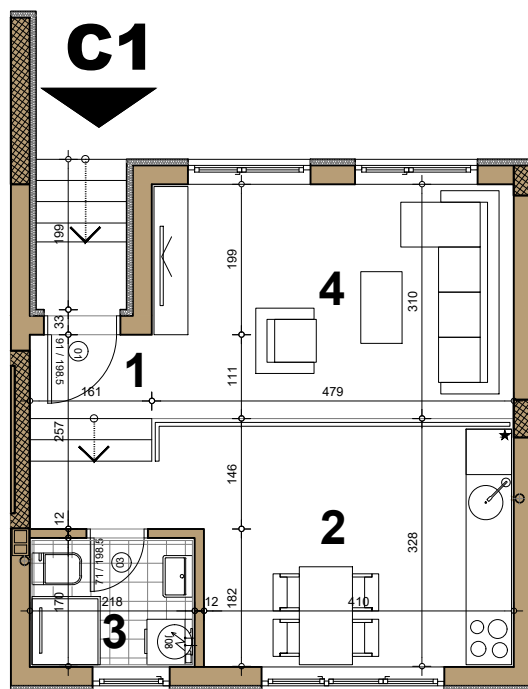
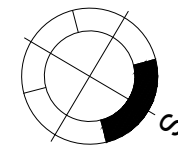
STAMBENI OBJEKAT

Novi Sad, ugao Filipa Višnjića i Belih njiva

Prizemlje ► STAN C1

GARSONJERA

36.05 m²



C1 - GARSONJERA

broj	naziv prostorije	obrada poda	površina (m ²)
1	ulaz	parket	1.79
2	kuhinja	ker.pl.	16.82
3	kupatilo	ker.pl.	3.71
4	dnevna soba	parket	14.85
UKUPNO NETO			37.17 m²
UKUPNO NETO (-3%)			36.05 m²

