

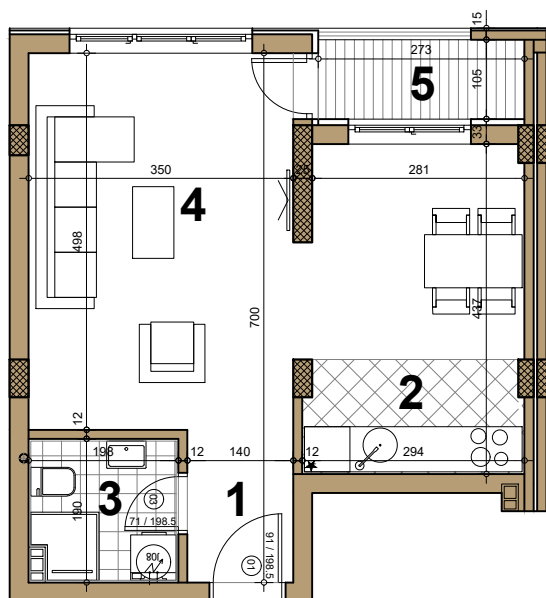
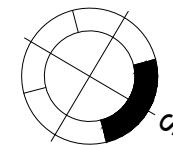
STAMBENI OBJEKAT

Novi Sad, ugao Filipa Višnjića i Belih njiva

Potkrovlje ► STAN B16

GARSONJERA

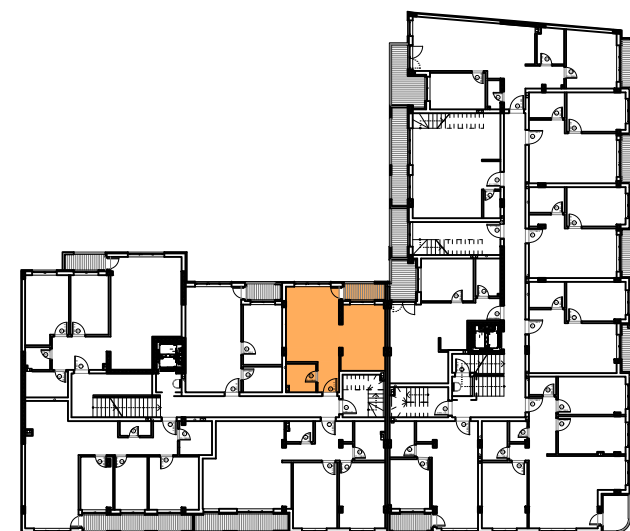
38.42 m²



B16

B16 - GARSONJERA

broj	naziv prostorije	obrada poda	površina (m ²)
1	ulaz	parket	2.83
2	kuhinja	ker.pl.	12.73
3	kupatilo	ker.pl.	3.76
4	dnevna soba	parket	17.43
5	terasa	ker.pl.	2.86
UKUPNO NETO			39.61 m²
UKUPNO NETO (-3%)			38.42 m²



ulica Bele njive

ulica Filipa Višnjića