

STAMBENI OBJEKAT

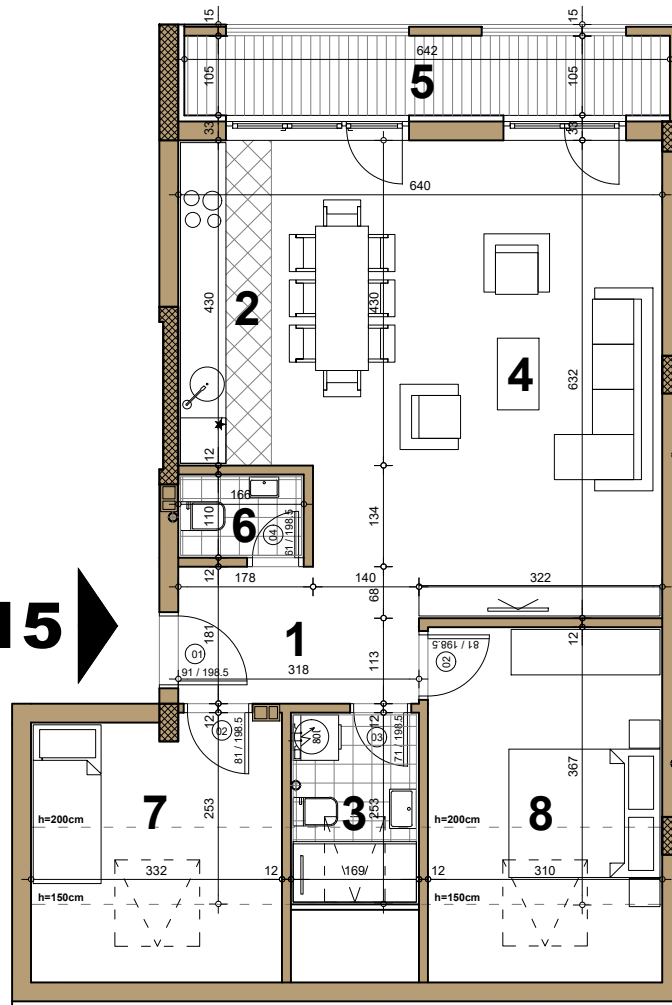
Novi Sad, ugao Filipa Višnjića i Belih njiva

Potkrovlje/dupleks ► STAN B15

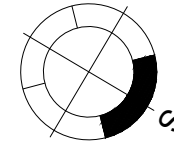
TROSOBAN

71.67 m²

B15 ►

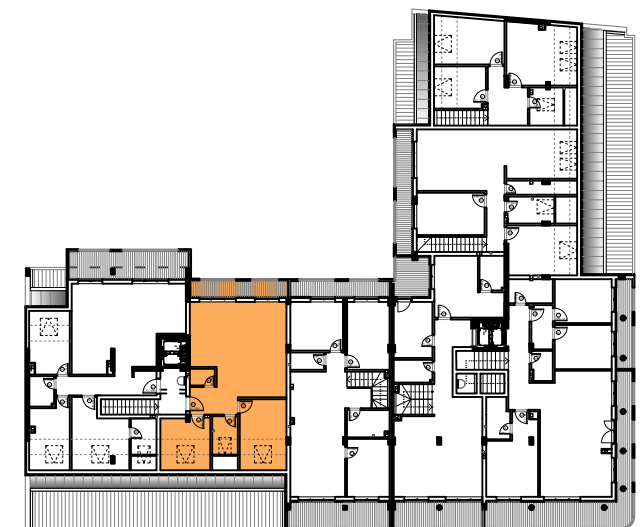


osnova dupleksa



B15 - TROSOBAN

broj	naziv prostorije	obrađa poda	površina (m ²)
dupleks			
1	ulaz	parket	4.80
2	kuhinja	ker.pl.	7.65
3	kupatilo	ker.pl.	4.29
4	dnevna soba	parket	29.20
5	kupatilo	ker.pl.	6.76
6	wc	ker.pl.	1.83
7	spavaća soba	parket	7.99
8	spavaća soba	parket	11.37
UKUPNO NETO			73.89 m²
UKUPNO NETO (-3%)			71.67 m²



ulica Filipa Višnjića

ulica Bele njive