

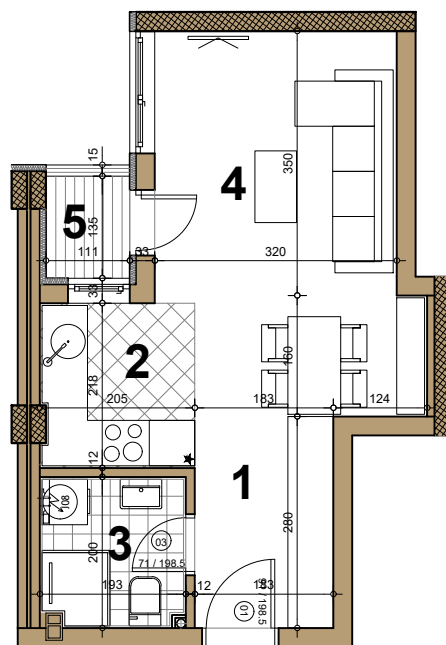
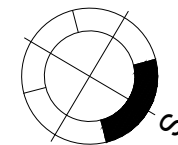
STAMBENI OBJEKAT

Novi Sad, ugao Filipa Višnjića i Belih njiva

Prizemlje ► STAN A6

GARSONJERA

30.12 m²



A6

A6 - GARSONJERA

broj	naziv prostorije	obrađa poda	površina (m ²)
1	ulaz	parket	3.88
2	kuhinja	ker.pl.	4.43
3	kupatilo	ker.pl.	3.83
4	dnevna soba	parket	17.41
5	terasa	ker.pl.	1.50
UKUPNO NETO			31.05 m²
UKUPNO NETO (-3%)			30.12 m²

