

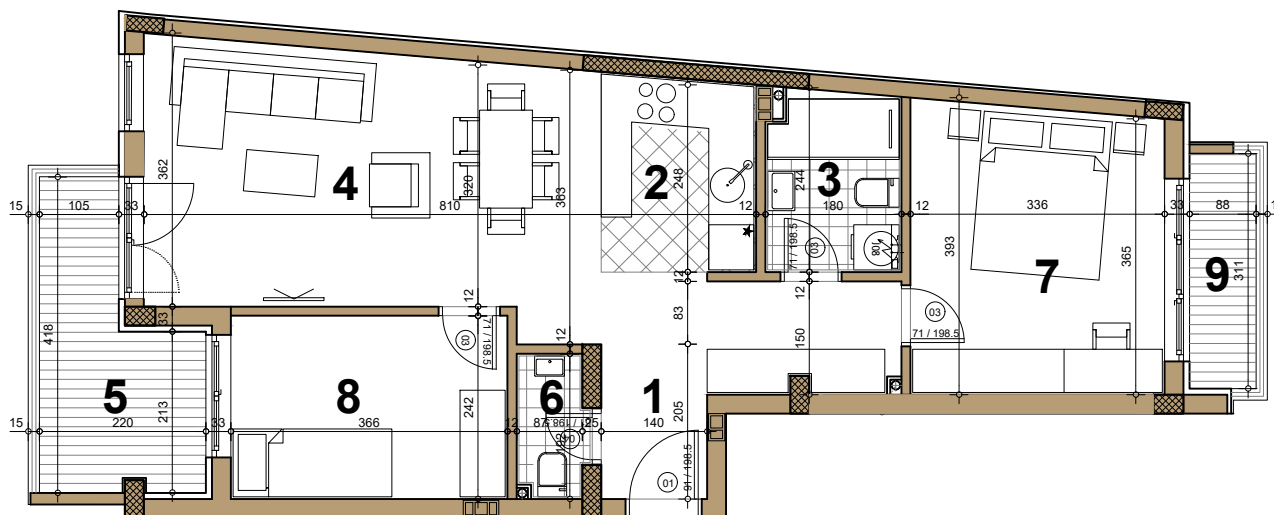
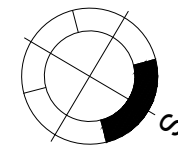
STAMBENI OBJEKAT

Novi Sad, ugao Filipa Višnjića i Belih njiva

Potkrovlje ► STAN A26

TROSOBAN

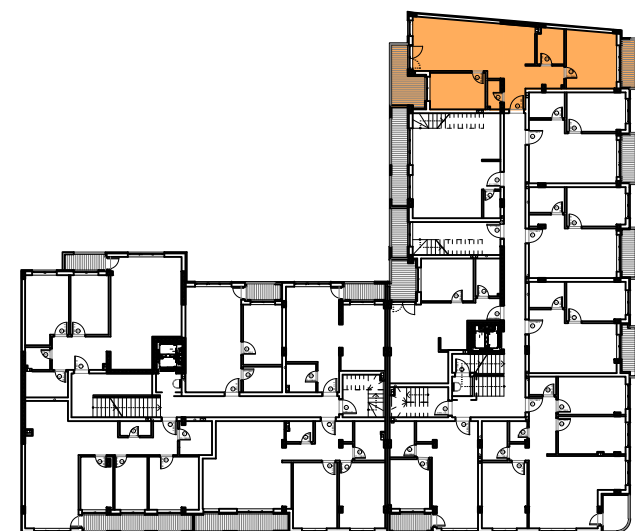
69.07 m²



▲
A26

A26 - TROSOBAN

broj	naziv prostorije	obrada poda	površina (m ²)
1	ulaz	parket	7.78
2	kuhinja	ker.pl.	5.43
3	kupatilo	ker.pl.	4.18
4	dnevna soba	parket	20.92
5	terasa	ker.pl.	6.78
6	kupatilo	ker.pl.	1.74
7	spavaća soba	parket	12.74
8	spavaća soba	parket	8.88
9	terasa	ker.pl.	2.76
UKUPNO NETO			71.21 m²
UKUPNO NETO (-3%)			69.07 m²



ulica Filipa Višnjića

ulica Belih njiva