

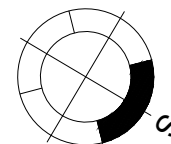
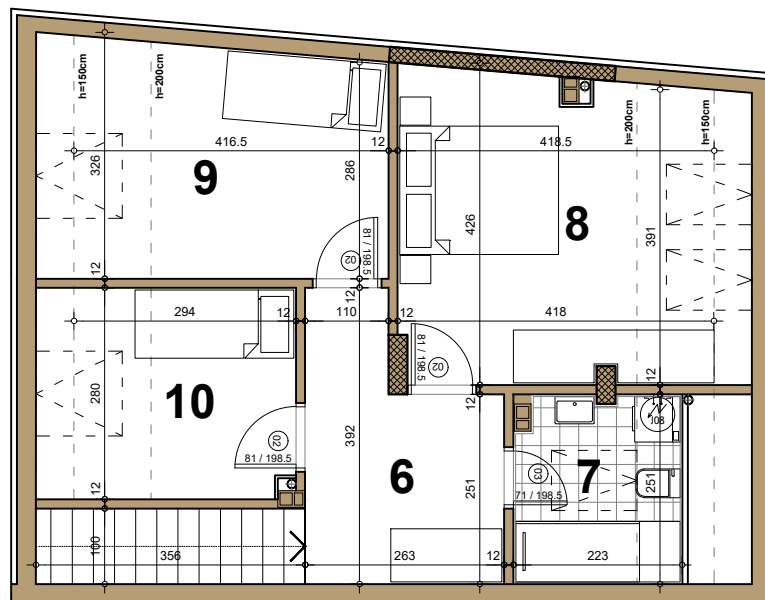
STAMBENI OBJEKAT

Novi Sad, ugao Filipa Višnjića i Belih njiva

Potkrovlje/dupleks ▶ STAN A25

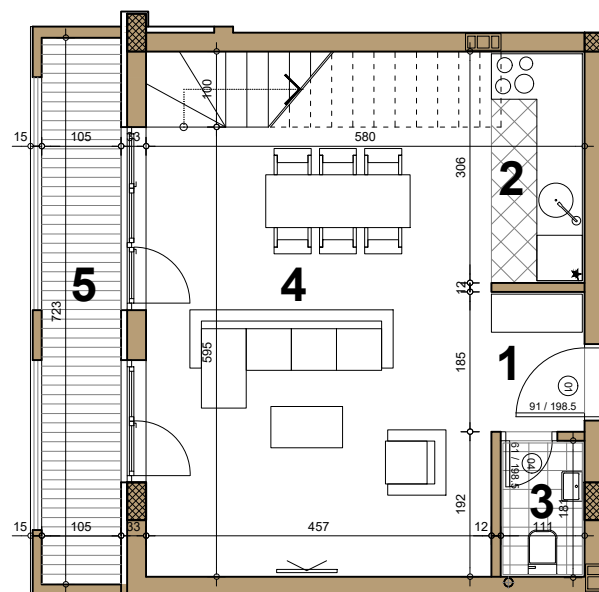
ČETVOROSOBAN

97.69 m²



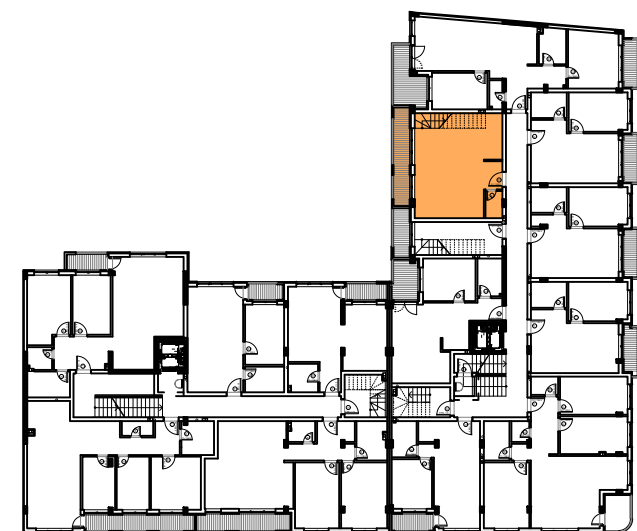
osnova dupleksa

A25 - ČETVOROSOBAN			
broj	naziv prostorije	obrađa poda	površina (m ²)
potkrovlje			
1	ulaz	parket	2.27
2	kuhinja	ker.pl.	3.77
3	wc	ker.pl.	2.00
4	dnevna soba	parket	29.03
5	terasa	ker.pl.	7.59
dupleks			
6	hodnik sa stepeništem	parket	12.80
7	kupatilo	ker.pl.	5.62
8	spavaća soba	parket	16.82
9	spavaća soba	parket	12.67
10	spavaća soba	parket	8.14
UKUPNO NETO			100.71 m²
UKUPNO NETO (-3%)			97.69 m²



◀ **A25**

osnova potkrovlja



ulica Belih njiva

ulica Filipa Višnjića