

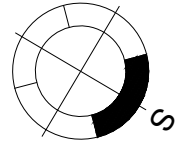
STAMBENI OBJEKAT

Novi Sad, ugao Filipa Višnjića i Belih njiva

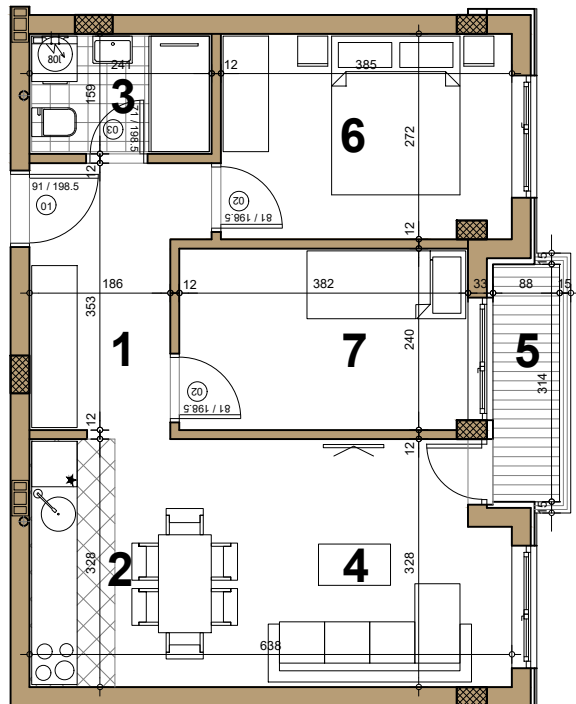
I/II sprat ► STAN A12/A20

TROSOBAN

51.89 m²

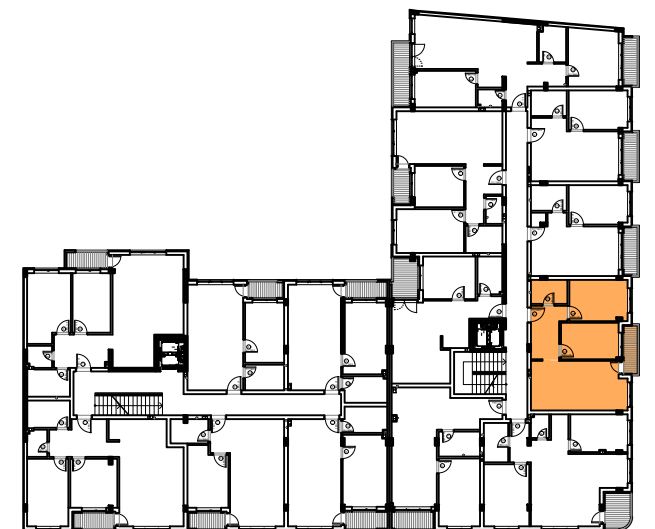


A12/A20 ►



A12/A20 - TROSOBAN

broj	naziv prostorije	obrada poda	površina (m ²)
1	ulaz	parket	7.12
2	kuhinja	ker.pl.	3.71
3	kupatilo	ker.pl.	3.83
4	dnevna soba	parket	16.55
5	terasa	ker.pl.	2.76
6	spavaća soba	parket	10.37
7	spavaća soba	parket	9.15
UKUPNO NETO			53.49 m²
UKUPNO NETO (-3%)			51.89 m²



ulica Bele njive

ulica Filipa Višnjića